



THE TOWN OF HIGH LEVEL VISITOR GUIDE

THE
TOWN OF
high level
VISITOR GUIDE



YOUR GUIDE TO - HISTORY - CULTURE - SHOPPING
RECREATION - WINTER SPORTS - SUMMER ACTIVITIES
- CAMPING - WILDLIFE - LOCAL EVENTS -



Welcome!



MAYOR CRYSTAL MCATEER

Welcome to the most northern Town in Alberta!

High Level is surrounded by Alberta's largest mixed boreal forest and is located in the northwestern corner of Alberta. We have plenty of activities and events to keep you entertained during your stay.

We offer unique opportunities to enjoy the beautiful outdoors and the rich diversity of the people who call this town home. With plenty of trails, parks, playgrounds, activities, and beautiful displays of northern lights, you're bound to find something that you and your family will enjoy.

No matter what time of year you come to visit, there is always something to keep you entertained - whether it's watching the High Level North Stars play hockey, attending a Town event such as Canada Day, or getting active at the Aquatic Centre. We hope you enjoy your stay and we look forward to welcoming you back again soon!

Cover Photo: The Mackenzie Crossroads Museum and Visitor Centre with its iconic big red chairs and hand-carved totem pole

The Town of High Level Visitor Guide

Table of Contents

- 2** Our History
- 4** Our Community and Culture
- 5** Museum and Visitor Centre
- 6** Winter Activities
Summer Activities
- 10** How to Get Here
Local Wildlife
Foldout Map
- 12** Annual Events
- 14** Parks & Playgrounds
- 16** Recreation Facilities
Camping
- 18** Where to Eat
Where to Shop
- 20** Where to Stay
Instagram Challenge



FB Page



Website





Our History



"Glimpses Through Time" by Dawn Truman, 1988 is a mural depicting Father Marcel Jal, High Level's first resident Roman Catholic Priest.

Prior to the settlement of High Level, this region was inhabited by several First Nations communities, including the Dene Tha' and Beaver First Nations. In 1788, a fur trading post was established on the Peace River near present-day Fort Vermilion. This marked the beginning of the region's fur trade. Before this area was surrounded by trees, it was an open grassland that was primarily used by the Dene Tha' to hunt and trap for items to trade. The original name of High Level was "Tloc Moi," which translates to Hay Meadow.

1946

The Mackenzie Highway was completed for limited traffic. High Level's convenient location made it the perfect place to stop for fuel on the way to the NWT.

1963

The beginning of the "big boom" after the arrival of the Great Slave Railway and the discovery of oil and gas in the region.

1965

High Level was declared a new town on **June 1, 1965**, with a population of 754 people. The appointed board of administration included Albert McClarty, Donald Edgar, and Leonard Gurel, with McClarty as chairperson. **The first Town Hall was constructed in the summer of 1965.**

High Level Grain Elevator



The first load of grain was delivered to the AB Pacific Grain Elevator in town on November 2, 1964. **This elevator was the most northerly elevator in the world.** A new elevator was recently built in 2020. It includes 32,000 metric tonnes of storage space and will be capable of loading 135 cars. **High Level is still home to the most northerly grain elevator!**

1973

High Level's first hospital, the High Level Community Health Centre, opened in June of 1973. It housed a 25-bed hospital, health unit, mental health services, and municipal nursing services. This Hospital was later renovated in 2006 and is now the home of the High Level Town Hall.

1976



The Town adopted the four arrow symbol as its **logo**

The Mackenzie Crossroads Museum and Visitors Centre held its grand opening. Plans for the museum had been in the works since 1977. The Museum still operates in the summer from Victoria Day long weekend to Labour Day long weekend.

The **totem pole** from the minimum security facility at Footner Lake was restored and erected at the **Mackenzie Crossroads Museum and Visitors Centre.**

High Level's **First Female Mayor** was elected in 2013! **Crystal McAteer** remains in office today.

The Chuckegg Creek Wildfire forced the town to evacuate on May 20th for two weeks. Hundreds of firefighters flew in from all over the world to help fight the fire and save the town. After it was determined there was no longer a threat to High Level, residents were welcomed home on June 3rd.

1983

On August 3, 1983, High Level was officially incorporated as a town with a population of 2,673. As an official town, High Level also elected its first mayor, **Robert E. Walter.**

1996

Cellular telephone services arrived in High Level and area.

2000

Work began on the Northwest Health Centre. It officially opened September 29, 2004

2005

2006

High Level's population reached **3,887 people!**

2013

2015

High Level celebrated its 50th anniversary on June 13. Events included a block party, town tours, and a concert featuring the band Chilliwack.

2019



Our Community and Culture

TOGETHER WE STAND

High level is proud of its diverse community and cultures. We recognize that the Town sits on the traditional lands of the Beaver, the Dene Tha', and the Cree First Nations, as well as the Metis Nation.

Many have come to work and settle in this thriving community. Families are able to connect through The Village – Mackenzie Family Resource Network. Seniors can now retire in the beautiful Mackenzie House, built in 2017, instead of having to move away.



We found creative ways to bring our community together through the Chuckegg Creek Wildfire that threatened our community in 2019 and throughout the pandemic. The Town of High Level continues to host events and programs.



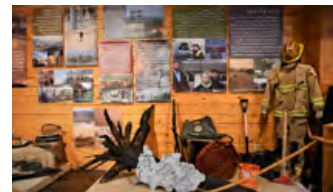
We stand more unified than ever after the Chuckegg Fire.

Annual National Indigenous Peoples Day event at Jubilee Park

Mackenzie Crossroads Museum and Visitor Centre

The Mackenzie Crossroads Museum and Visitor Centre is open from Victoria Day long weekend to Labour Day long weekend.

(780) 926-4811



The iconic totem pole located outside the Museum was hand-carved by Ernest Chowace before 2005.

Malcom Gunson, a High Level local, restored the Totem Pole in 2008 and it was later installed at the Mackenzie Crossroads Museum & Visitor Centre.



The Museum aims to promote local culture and history from the area by collecting, preserving, and exhibiting artifacts. The Visitor Information Centre has an extensive array of local, regional, provincial, and national travel information. Community members and visitors alike can access Town of High Level information packages or vacation planning brochures and maps.

The Museum features a gift shop that carries local hand-crafted and authentic Indigenous items. We also sell the works of local artisans and photographers, as well as souvenir items.

The Mackenzie Crossroads Museum celebrated its 30th Anniversary in 2021!

A logo "refresh" contest was held to commemorate the milestone! Entrants were challenged to take key themes from the original logo, which included trees, a wagon wheel, fencing, and the sun or moon, and refresh them into a new revamped logo. Our new logo design (left), was created by Darlene Derksen.





Winter Activities

Whether it is summer or winter there is always something to do in High Level!

The Jubilee Park Skate Path is a huge hit in the winter!

Lace up the skates

High Level has a variety of options for you and your family to hit the ice. You can visit the High Level arena for Public Skate, the High Level outdoor rink, or go for a skate on the Jubilee Park Skate path!

Get your curl on

Bring your friends and family for a fun game of curling at the High level curling rink. Contact the High Level Curling Club to rent the curling rink.

(780) 841-8416

Hit the trails

Take advantage of our short winter days and go for a walk on High Level's trails. You can also head north of Town on Highway 35 to Footner Lake and walk along the scenic 3.5 km trail next to the lake.



Explore the 3.5 km loop by Footner Lake

Bring your snowmobile

Bring your sled and check out more than 300 km of trails maintained by The Watt Mountain Wanderers Snowmobile Club. Visit the Watt Mountain Wanderers Facebook page or website for updates on the trails, membership, and events.

(780) 926-1231

wattmountianwanderers.ca

(780) 841-8940

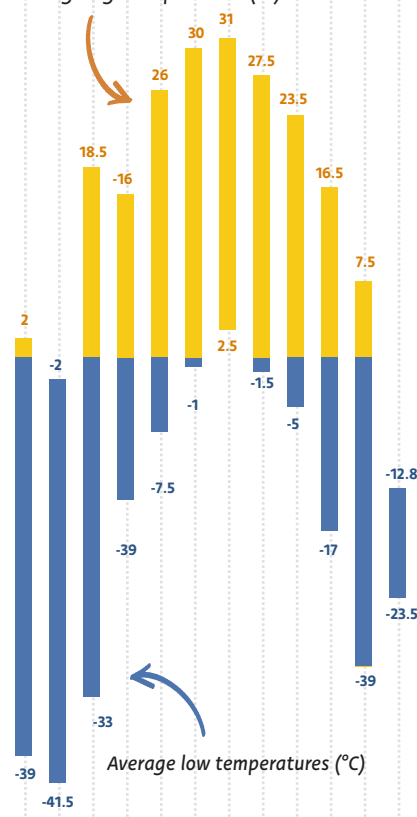


Check out more walking trails in town on the fold-out centre map!

How cold is High Level?

Jan Feb Mar Apr May Jun Jul Aug Sep Oct Nov Dec

Average high temperatures (°C)



Average low temperatures (°C)

Get active indoors

Avoid the cold and get in a workout at Jagged Edge Fitness Centre or a good stretch at Sacred Warrior Yoga. You can also practice your swing at High Level Indoor Golf.



Warm up in the water

Go for a swim at the Aquatic Centre. You can find the current pool schedule on our website.

www.highlevel.ca

Check out the northern lights!

Take advantage of High Level's optimal location and watch the northern lights. If it's a clear night, grab a hot chocolate and find a nice, open place to sit and watch the colours dance. Great locations to view the northern lights include Community Park, Centennial Park, Canfor Park, Jubilee Park skate path, or Footner Lake just north of town!



Summer Activities

Getting messy at the Canada Day Color Run!

Activities for the kids

High Level has eight parks with various types of play structures, green spaces, swings, and slides. On a hot day, cool off at the splash park located in Centennial Park. Or bring your skateboard and show off your best tricks at the Skate Park. For a complete list of parks in this guide, see page 14.

Learn History and check out the Gift Shop

The Mackenzie Crossroads Museum and Visitor Centre aims to promote the history and development of the area from the 1900s to the present. We collect, preserve, and exhibit artifacts, as well as provide alternative educational programming, all while supporting and promoting local tourism.

Go on a nature walk

High Level trails are a mixture of open and treed areas for walking, running, and biking and are optimal for a walk on your own, with a friend, or a dog!

Let's go golfing!

In High Level, there are three ways to golf! Try something new by checking out the Disc Golf Course, located at Community Park. Practice your swing at the Indoor Golf. You can always stick to the traditional game and visit the Fox Haven Golf & Country Club for a round or two outdoors.

High Level Indoor Golf

(780) 285-0021

Fox Haven Golf & Country Club

(780) 926-3005



There's no shortage of great walking trails to enjoy!



Bread for sale at the Saturday Farmer's Market

On Saturdays, we shop local

Check out the [High Level Farmer's Market](#) every Saturday in the summer from 10 am - 2 pm in the curling rink for all you local shoppers.

Indoor activities

The [R.E. Walter Memorial Aquatic Centre](#) and a number of private fitness facilities will meet all your indoor fitness needs.

Check out the Gun Range

Get more info and purchase memberships at [High Level Home Hardware](#).

We provide a place where gun owners can meet, shoot targets, picnic, and socialize. There is a 600 yard long gun range, a 25 yard pistol range, and trap and skeet range.



Community Gardens

Grow something at the Community Gardens

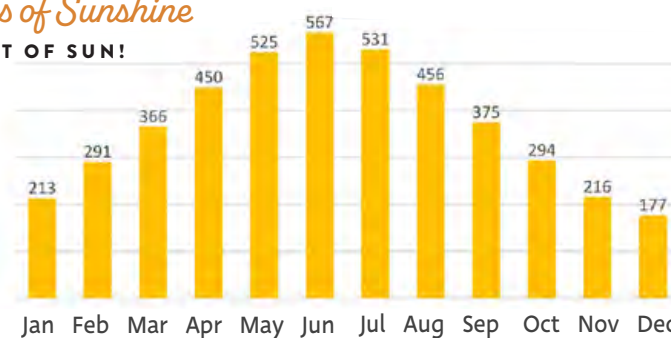
Located at The Village and Christian Fellowship Church. Give FCSS a call for more information about gardening! (780) 821-4010

Go for a ride at the High Level Motocross Track

Bring out your dirt bike and check out the [High Level Motocross Track](#), located south of High Level.

Total Hours of Sunshine

WE GET A LOT OF SUN!





How to get here



High Level Airport

RANGE RD 194A

The High Level Airport, located 14 km north of town, has two chartered flight services; Northwestern Air Lease, which travels to Edmonton, Hay River, and Fort Smith; and Central Mountain Air, which travels to Edmonton and Calgary. For more information, and flight schedules visit nwal.ca OR flycma.com

High Level is surrounded by Alberta's largest mixed boreal forest and is located in the northwestern corner of Alberta.

The town is at the intersection of the Mackenzie Highway (HWY 35) and Highway 58, about 800 kilometres north of Edmonton and 725 km south of Yellowknife, Northwest Territories.



There are two vehicle rental companies located at the airport: Budget Car Rental and National Car Rental. In addition, there is free public Wi-Fi, an ATM, and more!



Watch out for Wildlife!

While High Level is a busy little town, there is still an abundance of wildlife that visit. Always be aware and keep an eye out for:

BEARS

MOOSE

GEESE

DEER

COYOTES

FOXES

WOLVES

MUSKRATS

BEAVERS

PLEASE NOTE

Wild animals are wild and unpredictable. Never exit your vehicle, feed them or attempt to get close to any wildlife you encounter. Always respect their space and remember that you are visiting their home.

Alberta

Fish and Wildlife Contact


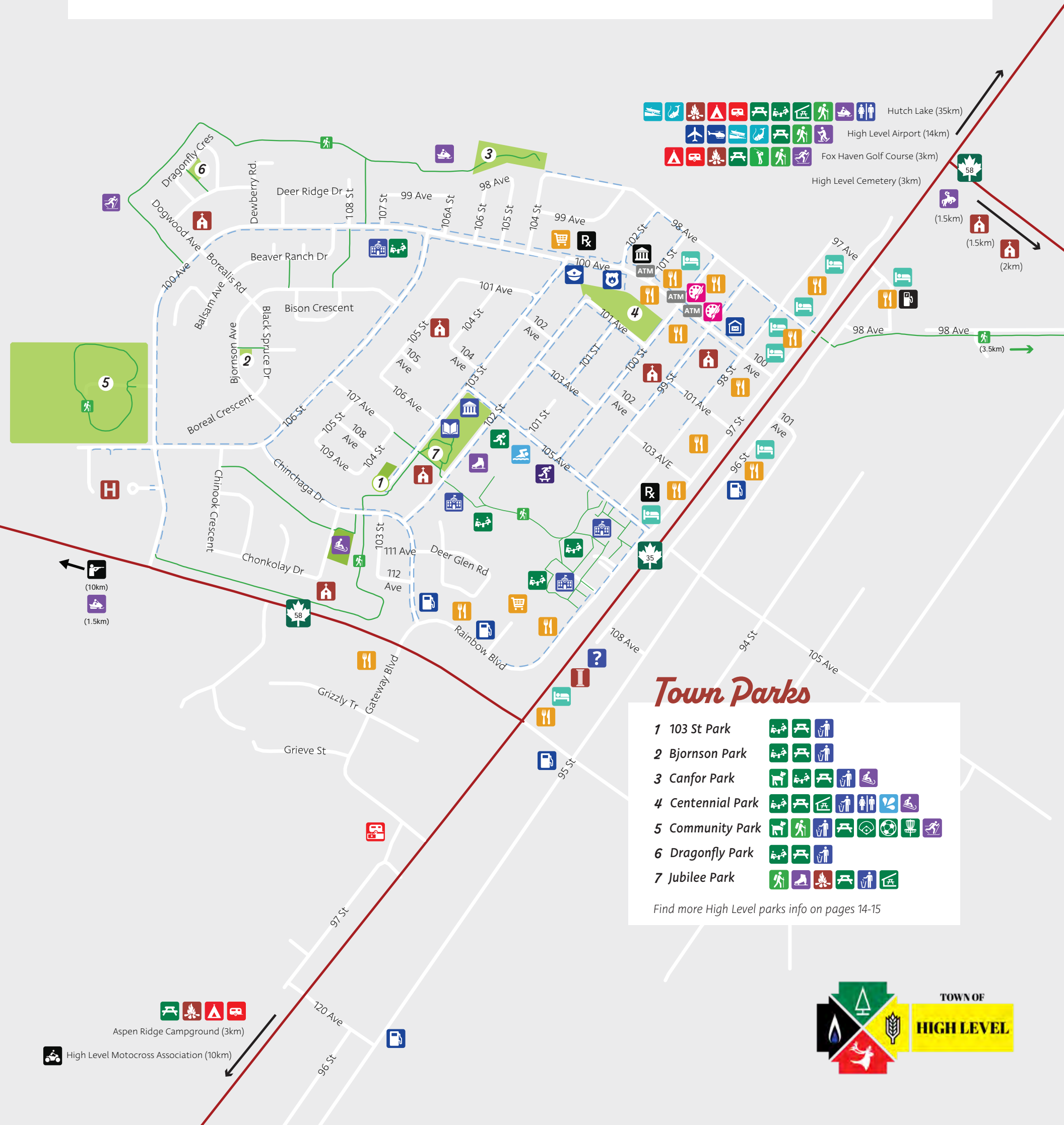
 (780) 926-2238



Photo Credit: Adam in The Wild Photography

Legend

- | | | | | |
|-----------------------|--------------------|-----------------------|-------------------|---------------|
| Airport | Fire Pits | Ice Skating | Post Office | Swimming Pool |
| Baseball Diamond | Fishing | Info/Visitor's Center | RCMP | Toboggan Hill |
| BMX/Skateboard Park | Food & Beverage | Library | Rodeo Grounds | Town Hall |
| Boat Launch | Fuel | Litter Bins | RV Camping | Walking Trail |
| Camping | Gazebo | Motocross | RV Sanitary Dump | Washrooms |
| Court House | Golf Course | Mural | School | Sidewalk |
| Cross Country Ski | Grocery Store | Museum | Snowmobile Trails | |
| Disc Golf | Gun Range | Pharmacy | Snowshoeing | |
| Dog Park | Helicopter Landing | Picnic Area | Soccer Field | |
| Electric Car Charging | Hospital | Place of Worship | Splash Park | |
| Fire Hall | Hotel | Playground | Sports Complex | |



Town Parks

- | | |
|-------------------|--|
| 1 103 St Park | |
| 2 Bjornson Park | |
| 3 Canfor Park | |
| 4 Centennial Park | |
| 5 Community Park | |
| 6 Dragonfly Park | |
| 7 Jubilee Park | |

Find more High Level parks info on pages 14-15

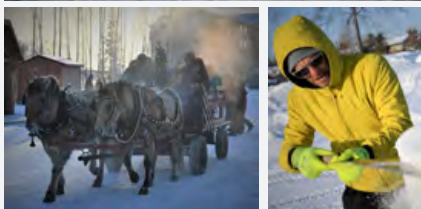




Annual Events in High Level

Frostival is an annual event hosted by the Town in February! People of all ages are welcome to join the festivities! Come out and enjoy the creative ice and snow sculptures, skating, winter games, and more! Check out our Facebook page for event details.

[Town of High Level](#)



Canada Day Celebration

The Town holds a celebration every year on Canada Day. Bring your family for summer activities in the park, which include water games, bouncy castles, public swim, museum tours, and more! Check out our Facebook page for event details!

[Town of High Level](#)

Farmer's Market

Join us during the summer months at the High Level curling rink on Saturdays for fresh produce, baked goods, and handmade items. For more details, find the market on Facebook!

[High Level Farmer's Market](#)

Did you know?

High Level Agricultural Society held their first Farmer's Market in High Level in 1979. Present day, the Farmer's Market Committee organizes the weekly markets and they run every Saturday for the months of May –September.



National Indigenous Peoples Day is held on June 21 by the High Level Native Friendship Centre. Join us for traditional drumming, family activities, and more!

[High Level Native Friendship Centre](#)

High Level Rodeo is an annual event hosted in the spring by the High Level Agricultural Exhibition Society. The rodeo is a multi-day event with kids and adult events, including: barrel racing, pole bending, saddle bronc, bareback riding, bull riding, various horse races and more!



[High Level Agricultural Exhibition Society](#)

Snowmobile Poker Rallies are annual events hosted by the Watt Mountain Wanderers Snowmobile Club! Come out and enjoy a day snowmobiling or spectating and enter for a chance to win various prizes.

[Watt Mountain Wanderers Snowmobile Club](#)

Christmas Open House is hosted annually by the Town at the Mackenzie Crossroads Museum and Visitor Centre. Join us for Christmas games (indoor and outdoor), tours, activities, and more! Check out our Facebook page for event details!

[Town of High Level](#)





Parks and Playgrounds

103 Street Park

10804 103 ST

103 Street Park is a perfect place to take the kids! It is located near the walking path and is a great stop along the way to take a break with your family. You can find a small open green space, two playground structures, and a swing set.



103 Street Park

Bjornson Park

35 BJORNSON AVE

Bjornson Park is a great place to take your family. You can sit on the bench and watch your kids as they play on the playground structure.



Bjornson Park

Canfor Park

9800 104 ST

Canfor Park is a secluded park away from the hustle and bustle of downtown High Level. You can find a large, open green space perfect for a game of frisbee, a playground structure, a swing set, a toboggan hill, and a fenced dog park with a separate small dog area and double entry gates.



Centennial Park & Splash Park

101 AVE

Centennial Park is in the centre of High Level's downtown district. The park features open green space, play structures, toboggan hills, bathrooms, splash park, walking path, tennis, basketball, and beach volleyball courts.



Centennial Park

Dragonfly Park

11 DRAGONFLY

If you're looking for a cute quiet area Dragonfly Park is the place to be. Sit on a bench or bring a blanket to sit on the grass and watch the kids on the playground.



Dragonfly Park



Jubilee Park

Jubilee Park

10511 103 ST

Jubilee Park is the best location in town for a family picnic or a short walk with your pet. If you plan ahead you can pack s'mores and hot dog supplies and sit around the fire with your family and friends. In winter, the Jubilee walking path is converted into a skate path so don't forget to pack your ice skates!



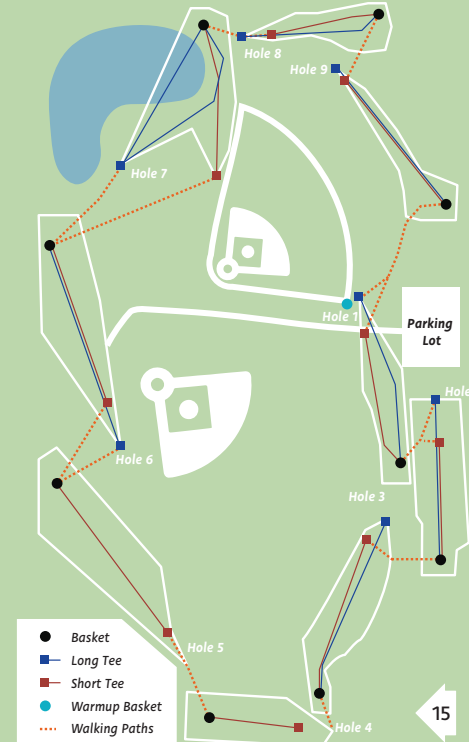
High Level Community Park

11200 100 AVE

Community Park is a large open space perfect for multi-person outdoor games like frisbee or softball. You can also practice your frisbee skills with a game of disc golf, or you can let your dog roam free in the designated off-leash area of the park.



DISC GOLF COURSE





Town Facilities

Sports Complex

10101 105 AVE

The Sports Complex can meet all your winter needs! From children's hockey tournaments to private rentals, we offer it all. If you prefer an outdoor setting, the outdoor skating rink next to the arena is the perfect place to be. You can even rent the curling rink for you and your friends to get in a game of curling while you're in town!

(780) 841-8416

RE Walter Memorial Aquatic Centre

10101 105 AVE

There is never a bad time to go swimming! Visit the Aquatic Centre and get your daily exercise in. You can swim laps in the four lane saltwater pool, try out the climbing wall, relax in the hot tub, or bring the kids to play in the tot area. If you don't feel like swimming with your family, you can always watch from the viewing area next to the pool. Swim schedule and price details can be found on our website.

www.highlevel.ca
 (780) 926-3662

Skate Park

10101 105 AVE (NEXT TO THE AQUATIC CENTRE)

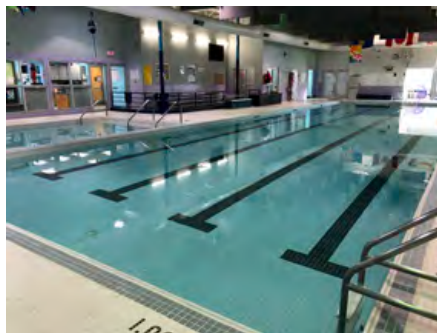
Bring out your bike or your skateboard and check out the High Level Outdoor Skate Park! Practice your tricks on the three-foot half ramp, boxes, and multiple rails.



Walking Trails

IN TOWN – FOLD OUT MAP

Enjoy the long summer days in High Level by taking a stroll on one of High Level's walking paths! Don't forget the mosquito spray!



Picnic Area	Playground	RV Sites	Laundry	Pet Friendly
Shelter	Swimming	RV Dumping	Showers	ATV Trails
Firepits	Fishing	Group Site	Water	
Walking Trails	Boat Launch	Power	Wifi	



Aspen Ridge Campground

3 KM SOUTH OF HIGH LEVEL

Whether you are passing through or staying a while, Aspen Ridge Campground is perfect with full serviced sites. Close to town with all amenities plus the convenience of wifi.

(780) 926-4540
aspenridge@telus.net
aspenridgecampground.ca



Fox Haven Golf & Country Club

3 KM NORTH OF HIGH LEVEL ON HWY 35

Camp right by the golf course, with scenic views of the greens.

(780) 926-3005
foxhavengolf@hotmail.com
foxhavengolf.ca



Hutch Lake

35 KM NORTH OF HIGH LEVEL ON HWY 35

Camp with a panoramic view of the lake or choose a site surrounded by the majestic forest on the side of Watt Mountain. Boating, swimming, fishing, beach volleyball, as well as a playground for the little ones.

(780) 927-3718



Where to Eat



Stop for coffee at
Traditions Café & Gifts!

A&W

10110 97 ST

☎ (780) 926-3151

Bieu T&T Vietnamese Restaurant

10014 97 ST

☎ (780) 841-2123

Boston Pizza

9506 114 AVE

☎ (780) 841-3443

Canton Chinese and Western Cuisine

9908 100 AVE

☎ (780) 926-3053

Dairy Queen

10302 97 ST

☎ (780) 841-0143

Days Inn Restaurant

10101 96 ST

☎ (587) 743-0112

Denny's/Bar One

10310 97 ST

☎ (780) 821-1442

Flamingo Inn

9802 97 ST

☎ (780) 926-8844

Good Hands Pizza & Asian Cuisine

9808 RAINBOW BLVD

☎ (780) 926-8829

KFC

11501 95 ST

☎ (780) 926-3181

Mackenzie House Bistro

11201-100 AVE

☎ (780) 926-3900

Matt's Pizza

10009 100 AVE

☎ (780) 926-2220

Mirage

9616 HWY 58

☎ (780) 821-1000

Pizza Hut

10902 RAINBOW BLVD

☎ (780) 926-3900

Starbucks

10308 97 ST

Stardust Restaurant and Lounge

9704 97 ST

☎ (780) 926-4222

Subway

11002 RAINBOW BLVD

☎ (780) 926-7827

Tim Hortons

2 GATEWAY BLVD

☎ (780) 821-4121

The Eagle Restaurant

9815 101 STREET

☎ (780) 926-7085

Traditions Café & Gifts

9907 100 AVE

☎ (780) 926-3100



Shop Local

VISIT WWW.HIGHLEVEL.CA FOR A COMPLETE
DIRECTORY OF LOCAL SPOTS TO SHOP!



Where to Stay

Best Western Mirage*

9616 HWY 58

(780) 821-1000

bestwesternhighlevel.com

Best Western Mirage Hotel Resort

Days Inn*

10101 96 STREET

(780) 926-5005

info@daysinnhighlevel.com

daysinnhighlevel.com

Econo Lodge Inn & Suites*

9722 97 ST

(780) 841-0234

info@econolodgehighlevel.com

econolodgehighlevel.com

Quality Inn & Suites*

9704 97 ST

780-926-4222

info@qualityinnhighlevel.com

qualityinnhighlevel.com

Our Place Motel

10402 97 ST

(780) 926-2556



* PARTNERS IN TOURISM *

Flamingo Inn*

9802 97 ST

(780) 926-8844

theflamingoinn@hotmail.com

flamingoinnhighlevel.com

The Flamingo Inn

Super 8*

9502-114 AVE

(780) 841-3448 or 1-800-454-3213

res@super8highlevel.com

super8.com/highlevel

Executive House Inn and Suits

9815 101ST

(780) 926-3311

executivehousesuites.com

Sweet Dreams Motel

9810 97 ST

(780) 926-2727



townhighlevel

Follow



The Town of High Level Visitor Guide

Instagram Photo Challenge

Visit these spots in High Level, snap a selfie, post them on Instagram, and tag us! Hashtag #highlevelfun for a chance to be reposted on our Instagram!

POSTS

VIDEOS

TAGGED

#HIGHLEVELFUN

1. High Level Murals on Main Street

Can you find all six?

2. At a Town event (Canada Day, Halloween, etc.)



3. Driving the Firetruck at the 103 Street Park

4. Walking on one of the trails

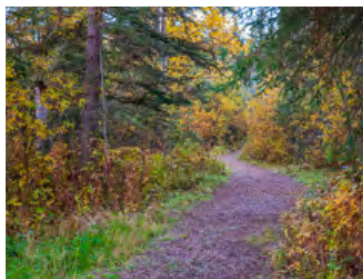


5. In front of the most northerly grain elevator in Alberta

6. Big red chairs at the Museum



7. Skating at one of our skating Locations (Arena, Outdoor rink, Jubilee Skate Path)



CONTACT US

Town of High Level Town Hall
10511 - 103 Street
High Level, AB T0H 1Z0

Phone: 780-926-2201
Fax: 780-926-2899
highlevel.ca